

Textured and Smooth

Interior applications | based on RAL | Volume 3



Powder coatings for interior industrial applications

Standard interior applications

TIGER Drylac® Series 09 is a polyester/epoxy-based standard cure powder coating. When lower or faster cure parameters are required, **TIGER Drylac® Series 89** polyester/epoxy-based is recommended. Both **TIGER Drylac® Series 09** and **TIGER Drylac® Series 89** are ideal for applications such as electrical and electronic enclosures, store fixtures, shelving, office and school furniture, ceiling panels, cladding components, radiators, tools and equipment, toys and machinery parts. They provide very good mechanical and flow properties, excellent coverage and good storage stability.

Chemical resistance

TIGER Drylac® Series 69 is an epoxy-based powder coating with excellent chemical and corrosion resistance, very good mechanical and flow properties and good storage stability. It provides excellent coverage. It is ideal for laboratory equipment, machinery parts, pump housing as well as surfaces where increased chemical resistance is required.

Specialties

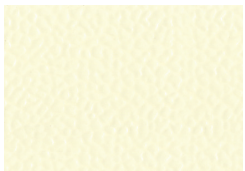
TIGER Drylac® Series 09 Electrostatic Dissipative (ED) powder coatings allow a controlled dissipation of the static buildup or prevent the buildup of a high charge in applications such as computer hoods and electronic cabinetry. Resistivity measurements in the lab measure 10^6 to 10^9 ohms. It is possible to custom-match colors in a range from dark grey to black.

FDA-compliance

TIGER Drylac® Series 09 FDA-compliant powder coatings are in conformity with the Food and Drug Administration's raw materials requirements of 21 CFR 175.300 "Resinous and Polymeric Coatings". FDA-compliant powder coatings also "conform" and "comply" with the requirements of 21 CFR 178.3297 "Colorants for Polymers". **TIGER Drylac®** has not conducted compliance tests, but rather relies on the raw materials suppliers to provide the appropriate documentation. It is the buyer's and customer's responsibility to test applied parts carrying the mention "FDA approved", as may be required by their customers.

approx RAL color	rough texture matte	rough texture glossy	fine texture	smooth matte	smooth semigloss
RAL 1013	09/10030	89/10020	89/10990	09/10870	-
RAL 1015	-	89/15080	89/15430	09/15380	-
RAL 1021	-	89/20120	-	-	-
RAL 3002	-	89/30560	89/30450	-	-
RAL 5003	-	89/40930	89/41040	-	-
RAL 5009	-	-	89/41050	-	-
RAL 5010	09/41000	89/40480	89/41060	-	89/40880
RAL 5012	09/40110	89/40940	89/41070	-	-
RAL 5015	09/41130	89/41110	-	-	-
RAL 7001	-	89/71320	89/71460	-	-
RAL 7012	09/71410	-	89/71470	-	89/71200
RAL 7016	09/71420	-	89/71480	-	89/71260
RAL 7021	09/70110	-	89/71490	09/71190	-
RAL 7030	09/70160	-	89/71500	-	-
RAL 7032	09/70200	89/70190	89/71520	-	-
RAL 7035	09/70230	89/70220	89/71530	09/71230	89/71300
RAL 7038	09/71440	89/71380	89/71540	09/71240	-
RAL 7040	-	89/70640	89/70630	-	89/76930
RAL 7044	-	89/70690	89/70680	-	-
RAL 8014	09/60060	89/60050	-	09/60320	-
RAL 8019	09/60160	-	89/60850	-	-
RAL 9001	09/10060	-	89/11000	09/10880	-
RAL 9002	09/10090	-	89/11010	09/10890	-
RAL 9003	09/10980	89/10960	89/11020	09/10900	89/10950
RAL 9005	09/80440	39/81420	09/80160	09/80130	89/80400
RAL 9010	09/10130	-	89/11030	09/10120	89/10110
RAL 9011	09/80450	-	89/80410	-	-
RAL 9016	-	89/10430	89/10420	09/13120	89/13130

rough texture matte



RAL 1013 - 09/10030



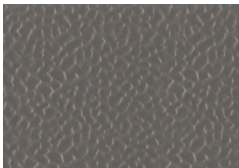
RAL 5010 - 09/41000



RAL 5012 - 09/40110



RAL 5015 - 09/41130



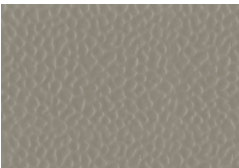
RAL 7012 - 09/71410



RAL 7016 - 09/71420



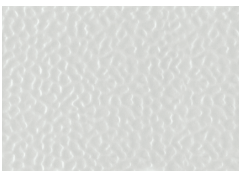
RAL 7021 - 09/70110



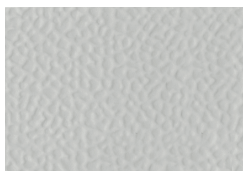
RAL 7030 - 09/70160



RAL 7032 - 09/70200



RAL 7035 - 09/70230



RAL 7038 - 09/71440



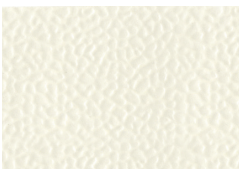
RAL 8014 - 09/60060



RAL 8019 - 09/60160



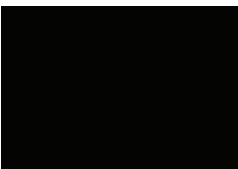
RAL 9001 - 09/10060



RAL 9002 - 09/10090



RAL 9003 - 09/10980



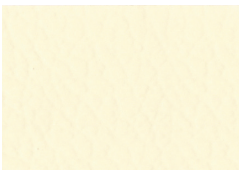
RAL 9005 - 09/80440



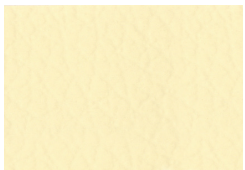
RAL 9010 - 09/10130



RAL 9011 - 09/80450



RAL 1013 - 89/10020



RAL 1015 - 89/15080



RAL 1021 - 89/20120



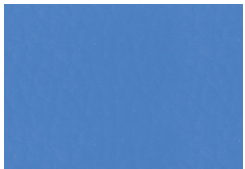
RAL 3002 - 89/30560



RAL 5003 - 89/40930



RAL 5010 - 89/40480



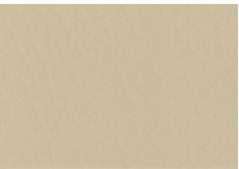
RAL 5012 - 89/40940



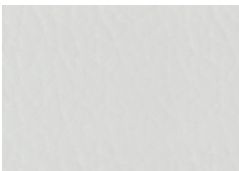
RAL 5015 - 89/41110



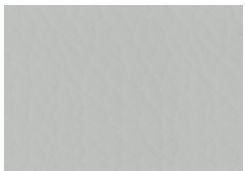
RAL 7001 - 89/71320



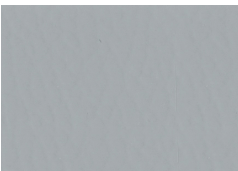
RAL 7032 - 89/70190



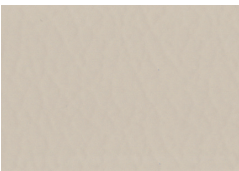
RAL 7035 - 89/70220



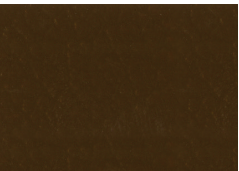
RAL 7038 - 89/71380



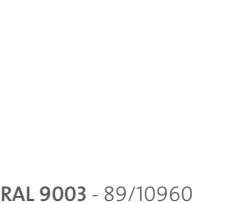
RAL 7040 - 89/70640



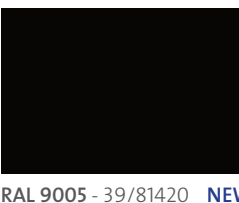
RAL 7044 - 89/70690



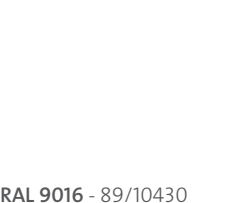
RAL 8014 - 89/60050



RAL 9003 - 89/10960

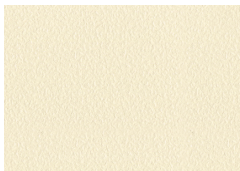


RAL 9005 - 39/81420 **NEW**

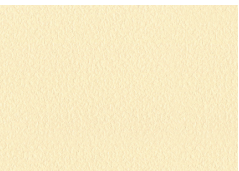


RAL 9016 - 89/10430

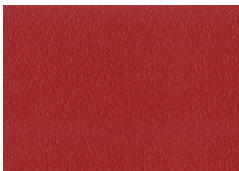
fine texture



RAL 1013 - 89/10990



RAL 1015 - 89/15430



RAL 3002 - 89/30450



RAL 5003 - 89/41040



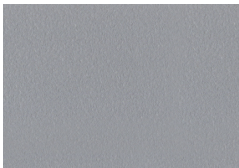
RAL 5009 - 89/41050



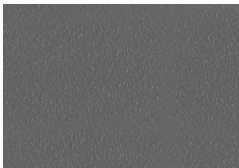
RAL 5010 - 89/41060



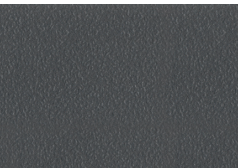
RAL 5012 - 89/41070



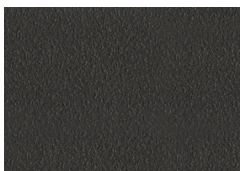
RAL 7001 - 89/71460



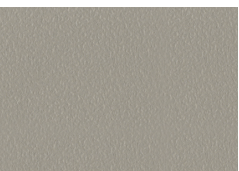
RAL 7012 - 89/71470



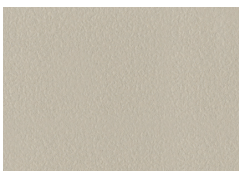
RAL 7016 - 89/71480



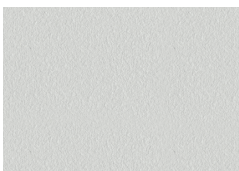
RAL 7021 - 89/71490



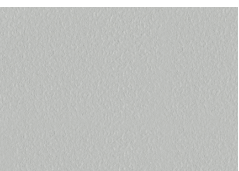
RAL 7030 - 89/71500



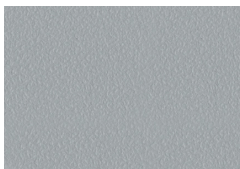
RAL 7032 - 89/71520



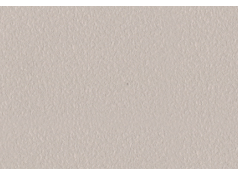
RAL 7035 - 89/71530



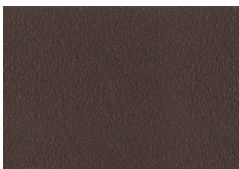
RAL 7038 - 89/71540



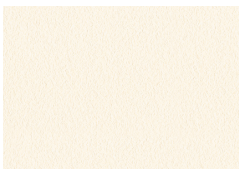
RAL 7040 - 89/70630



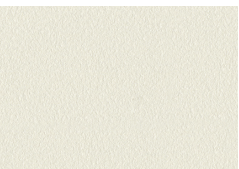
RAL 7044 - 89/70680



RAL 8019 - 89/60850



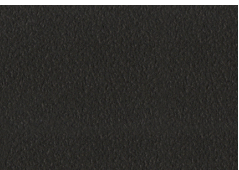
RAL 9001 - 89/11000



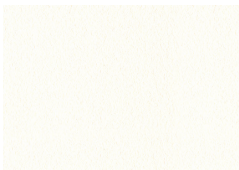
RAL 9002 - 89/11010



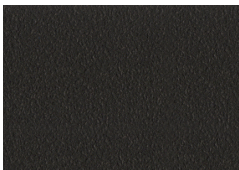
RAL 9003 - 89/11020



RAL 9005 - 09/80160



RAL 9010 - 89/11030



RAL 9011 - 89/80410



RAL 9016 - 89/10420

FDA-compliant | electrostatic dissipative | epoxy



FDA-compliant
Black FDA - 09/80108
gloss level 85±5



FDA-compliant
Grey FDA - 09/70339
gloss level 85±5



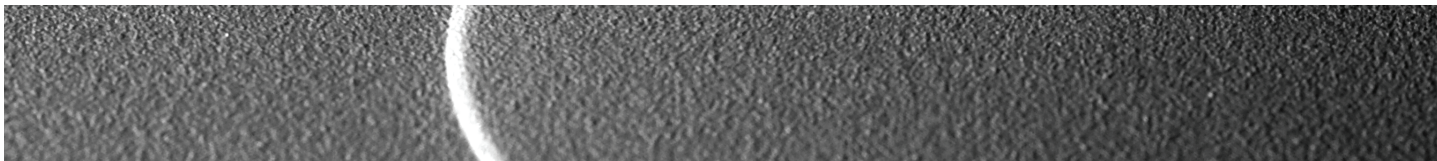
FDA-compliant
White FDA - 09/10126
gloss level 90+



electrostatic dissipative
Black Conductive - 09/81760
gloss level 20±5



epoxy
Black - 69/80291 **NEW**





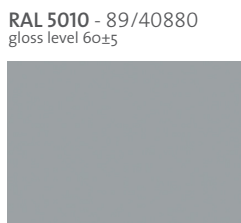
RAL 1013 - 09/10870
gloss level 20±5



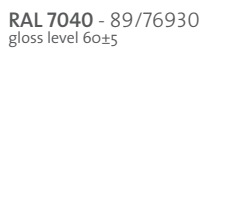
RAL 7038 - 09/71240
gloss level 20±5



RAL 9003 - 09/10900
gloss level 20±5



RAL 5010 - 89/40880
gloss level 60±5



RAL 7040 - 89/76930
gloss level 60±5

RAL 9016 - 89/13130
gloss level 60±5



RAL 1015 - 09/15380
gloss level 20±5



RAL 8014 - 09/60320
gloss level 15±5

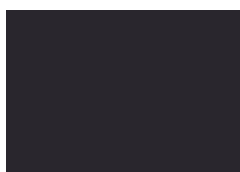


RAL 9005 - 09/80130
gloss level 20±5

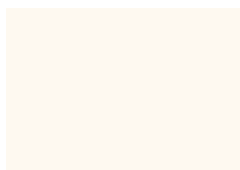


RAL 7012 - 89/71200
gloss level 60±5

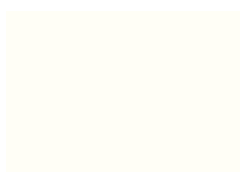
RAL 9003 - 89/10950
gloss level 60±5



RAL 7021 - 09/71190
gloss level 20±5



RAL 9001 - 09/10880
gloss level 20±5



RAL 9010 - 09/10120
gloss level 20±5



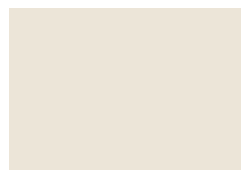
RAL 7016 - 89/71260
gloss level 60±5



RAL 9005 - 89/80400
gloss level 60±5



RAL 7035 - 09/71230
gloss level 20±5



RAL 9002 - 09/10890
gloss level 20±5



RAL 9016 - 09/13120
gloss level 20±5



RAL 7035 - 89/71300
gloss level 60±5



RAL 9010 - 89/10110
gloss level 60±5

Disclaimer

The colors featured in this color chart are matched as accurately as possible to **RAL standards**. Some deviations from the RAL standards might be noticeable due to texture and gloss level of the surface finish. Swatches have been matched to color standards at a **45-degree visual angle under a D65 Daylight** primary source. Gloss level on fine and rough textured swatches cannot be accurately measured. The swatches are to be considered as an indication only. In practice, discrepancy between the color swatch and the actual powder coating may arise. This is due to paper and ink limitations, the influence of light and heat during the color chart production, as well as gloss level, substrate, surface variations, binder systems and pigments, coating thickness and cure oven conditions used during application. For an accurate color and finish assessment, it is recommended to obtain a powder coated sample panel from **TIGER Drylac®**.

Textured and smooth gloss levels

Smooth flat matte gloss levels range from 0 to 15 units.

Smooth matte gloss levels range from 16 to 25 units.

Smooth semigloss gloss levels range from 55 to 65 units.

Smooth glossy gloss levels range from 80 to 95 units.

Fine and rough textured gloss levels cannot be measured and are, therefore, accorded visually.

** All products presented in this color chart are approximate to the RAL standard.*



TIGER WORLDWIDE NETWORK



contact details available at
tiger-coatings.com

